

Tuesday 10/06/2026

Depart the U.S. on your overnight flight to Brazil.

Wednesday 10/07/2026 Cuiaba

Hotel Deville (D)

Upon arrival to Sao Paulo, clear immigration and customs and then proceed to check in for your internal flight to Cuiabá. Please note that no guide services are included at Sao Paulo. Arrive into Cuiabá, known as the gateway to the Northern Pantanal, where we will be met and taken to the hotel. Check in at the hotel starts at 2 pm. We will have the rest of the day to rest and we'll gather for our Orientation and Welcome Dinner this evening. Internal flight to Cuiaba will be part of your international flight ticket and the cost is not included in your program price. Room type - Luxury

Thursday 10/08/2026 North Pantanal

Southwild Pantanal Lodge (BLD)

After breakfast at the hotel, we begin the journey to our lodge. A portion of the trip is along the Transpantaneira, with stops planned for wildlife photography. This highway, mostly dirt and gravel with more than 120 wooden bridges, is one of the only access roads into the Pantanal's interior. It passes through many habitats and is often described as the best road in the world to spot and photograph wildlife, which we will take advantage of during our drive. We'll arrive at the lodge in time for a late lunch. SouthWild Pantanal (SWP) previously named Fazenda Santa Tereza then Pantanal Wildlife Center, was formerly a traditional cattle ranch. Today, it is an eco lodge on 3,500 hectares of flooded lands situated at the end of Rio Pixaim. This afternoon we will take a boat outing on the river, famous for its abundance of birds, caimans, capybaras and jabirus. This evening (exact timing will be determined at the site), we will visit the lodge's ocelot blind for a one of a kind opportunity to observe these wild cats at close range. Room type - Standard

Friday 10/09/2026 North Pantanal

Southwild Pantanal Lodge (BLD)

Enjoy a full day exploring the area and seeking out wildlife by boat and on hikes. This evening we will have another opportunity to visit the ocelot blind. Room type - Standard

Saturday 10/10/2026 North Pantanal

Jaguar Suites (BLD)

After breakfast, we depart from Porto Jofre for the Jaguar Flotel. Stops are planned along the way for wildlife viewing and photography, and a boxed lunch will be provided. In the afternoon, reach the 820 foot wide Cuiabá River, which forms the border between the Brazilian states of Mato Grosso and Mato Grosso do Sul, to complete the journey by boating an hour and a half upstream to Three Brothers River. The 270,000 acre Meeting of the Waters State Park begins about a third of the way up the river to the flotel, which is located in the very heart of this remote, wild park. Depending on arrival time, we may be able to take our first boat safari to search for jaguars and other animals.

Sunday 10/11/2026 North Pantanal

Jaguar Suites (BLD)

After an early breakfast, leave the flotel for a boat trip to continue exploring the Meeting of the Waters State Park. Using small motor boats, we'll navigate the narrow and wild rivers in the core of this huge park. In addition to jaguars, there are two groups of giant otters at Jaguar Flotel. One group is near the mouth of the Piquiri River and the other resides near the 330 acre island that lies seven minutes by boat upstream on the Three Brothers River. Also watch for tapirs, various species of birds, and other wildlife during our outing today. Depending on sightings, this can be a full day outing, where we will return to the flotel in the late afternoon and have a boxed lunch, or have a morning and afternoon outing. Room type - Cabin

Monday 10/12/2026 North Pantanal

Jaguar Suites (BLD)

Continue with morning and afternoon boat outings to search for jaguars and other animals.

Tuesday 10/13/2026 North Pantanal

Jaguar Suites (BLD)

Continue with morning and afternoon boat outings to search for jaguars and other animals.

Wednesday 10/14/2026 North Pantanal

Southwild Pantanal Lodge (BLD)

Enjoy a final boat safari this morning then depart for Southwild Pantanal Lodge. Arrive in time for lunch then exploring the area to seek out wildlife by boat or a hike. Farewell dinner at the lodge. Room type - Standard

Thursday 10/15/2026 Depart

(B)

Very early breakfast at the lodge before we transfer as a group to Cuiaba airport to connect with flights. Round trip Cuiaba flights will be part of your international flights and they are not part of the program cost. We suggest booking flights out of Cuiaba departing no earlier than 1:00 pm.

Friday 10/16/2026

Arrive United States

I will be flying Chicago O Hare on Delta Frequent Flier miles through Atlanta to Sao Paulo. Then, it's a separate ticket for LATAM air to Cuiaba.

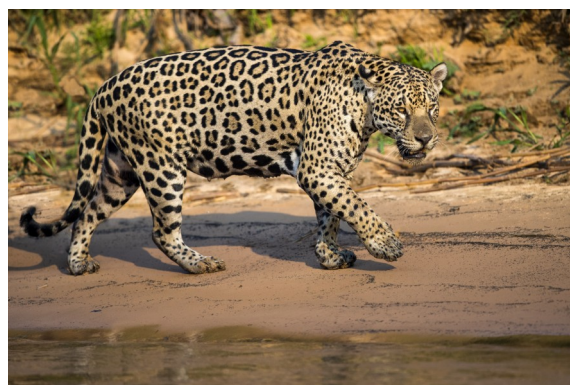
Same for return flights.

From a Viewing/photography perspective, There are few places in the world where we get such intimate views of so many diverse species. The boats are a great way to see everything up close and at eye level and the accommodations are right in the middle of all the action.

Some of the features I especially like include a raised blind at the Southwild ranch that puts us at eye level with a jabiru stork nest.



Here are some of the highlight species



The Jaguar Suites are amazing and I'm happy to say I helped with the design. The very best part of all is...We have fun!!

